

Introduction of Macau Sector in Hong Kong FIR

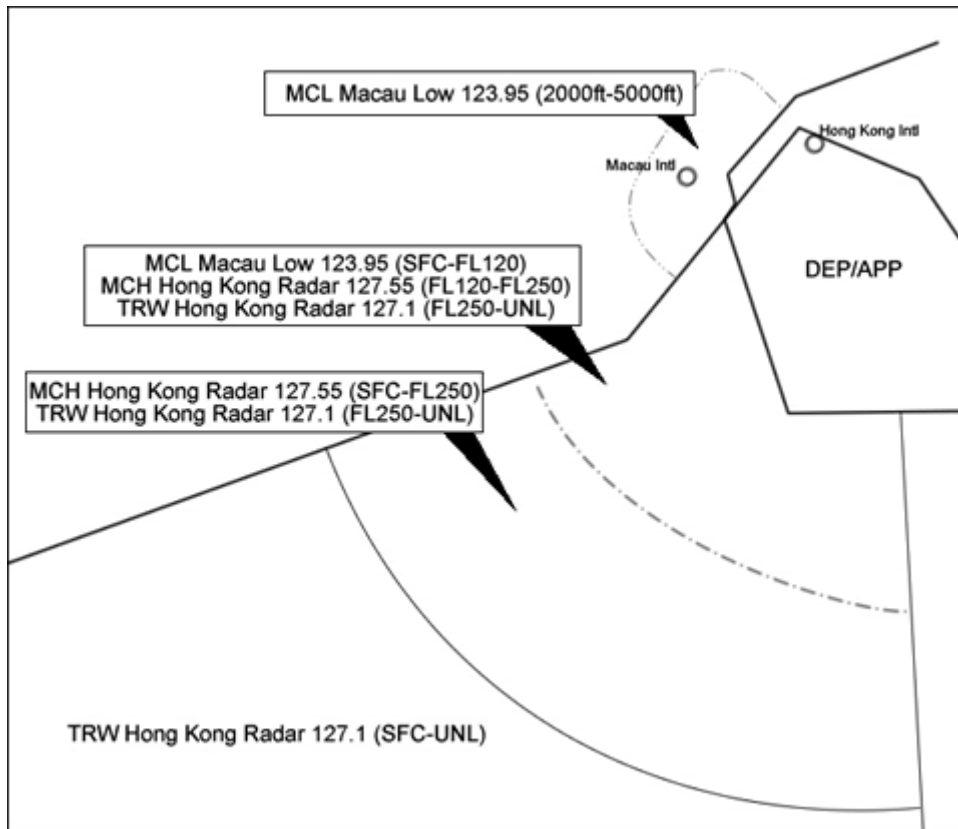
1. Introduction

- 1.1 To enhance operations in Hong Kong Terminal Control Area (TMA) and maintain an efficient flow of traffic at the Macau International Airport, the Macau Sector will be redivide to a Low and a High sector **with effect from 0001 UTC, 17 January 2008.**

2. Details of Macau Low Sector and Macau High Sector

- 2.1 The Macau Low Sector (radio call sign 'Macau Low' and login as 'VMMC_APP') will provide a radar service to aircraft departing or landing at Macau International Airport and any aircraft transiting in the airspace within 45 NM, SFC-FL120, as required using frequency 123.95 MHz with controller **rating S3 or above.**
- 2.2 The Macau High Sector (radio call sign 'Hong Kong Radar' and login as 'HKG_M_CTR') will provide a radar service to aircraft transiting airspace within 80 NM, FL120-FL250, as required using frequency 127.55 MHz with controller **rating C1 or above.**
- 2.3 If 'Macau Low' is not available, 'Hong Kong Approach', 'Hong Kong Departure' or 'Hong Kong Radar' will take over its airspace.

Information contained in here is **not to be used in real world.**



Attachment 1